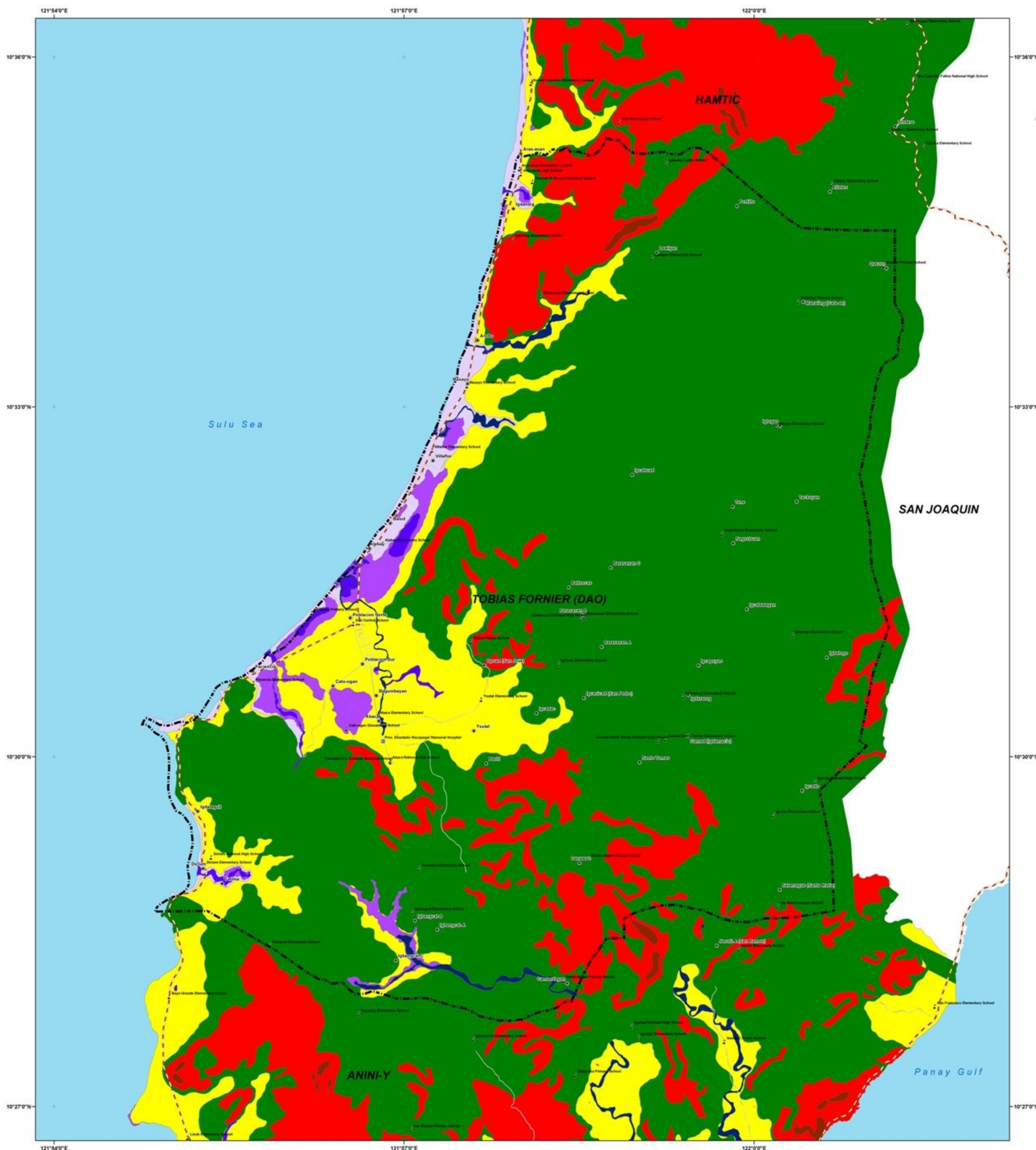




# PRELIMINARY DETAILED GEOHAZARD MAP OF THE MUNICIPALITY OF TOBIAS FORNIER (DAO), PROVINCE OF ANTIQUE, PHILIPPINES

Based on 1:10,000 scale Geohazard Map



## LEGEND :

### Landslide

- Very high landslide susceptibility**  
Areas usually with steep to very steep slopes and underlain by weak materials. Recent landslides, escarpments and tension cracks are present. Human initiated effects could be an aggravating factor.
- High landslide susceptibility**  
Areas usually with steep to very steep slopes and underlain by weak materials. Areas with numerous old/inactive landslides.
- Moderate landslide susceptibility**  
Areas with moderately steep slopes. Soil creep and other indications of possible landslide occurrence are present.
- Low landslide susceptibility**  
Gently sloping areas with no identified landslide.
- Debris flow / Possible accumulation zone**  
Areas that could be affected by landslide debris.

### Flooding

- Very high flood susceptibility**  
Areas likely to experience flood heights of greater than 2 meters and/or flood duration of more than 3 days. These areas are immediately flooded during heavy rains of several hours; include landforms of topographic lows such as active river channels, abandoned river channels and area along river banks; also prone to flashfloods.
- High flood susceptibility**  
Areas likely to experience flood heights of 1.0 to 2.0 meters and/or flood duration of more than 3 days. These areas are immediately flooded during heavy rains of several hours; include landforms of topographic lows such as active river channels, abandoned river channels and area along river banks; also prone to flashfloods.
- Moderate flood susceptibility**  
Areas likely to experience flood heights between 0.5 and 1 meter and/or flood duration of 1 to 3 days. These areas are subject to widespread inundation during prolonged and extensive heavy rainfall or extreme weather condition. Fluvial terraces, alluvial fans, and infilled valleys are areas moderately subjected to flooding.
- Low flood susceptibility**  
Areas likely to experience flood heights of 0.5 meter or less and/or flood duration of less than 1 day. These areas include low hills and gentle slopes. They also have sparse to moderate drainage density.

- Main Road
- Secondary Road
- Track; trail
- River
- Municipal Boundary
- Barangay center location
- Purok/Sito location
- School
- Hospital
- Areas susceptible to ground subsidence/sinkhole development
- Areas susceptible to rockfall
- Recent landslide deposit
- Old landslide deposit
- Active landslide
- Inactive landslide
- Landslide area with engineering measures
- Soil Creep
- Gully Development

Province of Antique  
Region VI



0 500 1000  
Meters



DEPARTMENT OF ENVIRONMENT AND NATURAL RESOURCES  
**MINES AND GEOSCIENCES BUREAU**  
North Avenue, Diliman, Quezon City

ALL RIGHTS RESERVED  
DECEMBER 2015

GIS Processing :  
Lands Geological Survey Division  
Data Sources :  
MGB Geohazard Assessment Team  
Geological Database and Information Systems Section  
Lands Geological Survey Division  
Geosciences Division MGB Region VI  
National Mapping and Resource Information Authority

Spheroid : Clark 1966  
Projection : Transverse Mercator  
Datum : Luzon 1911