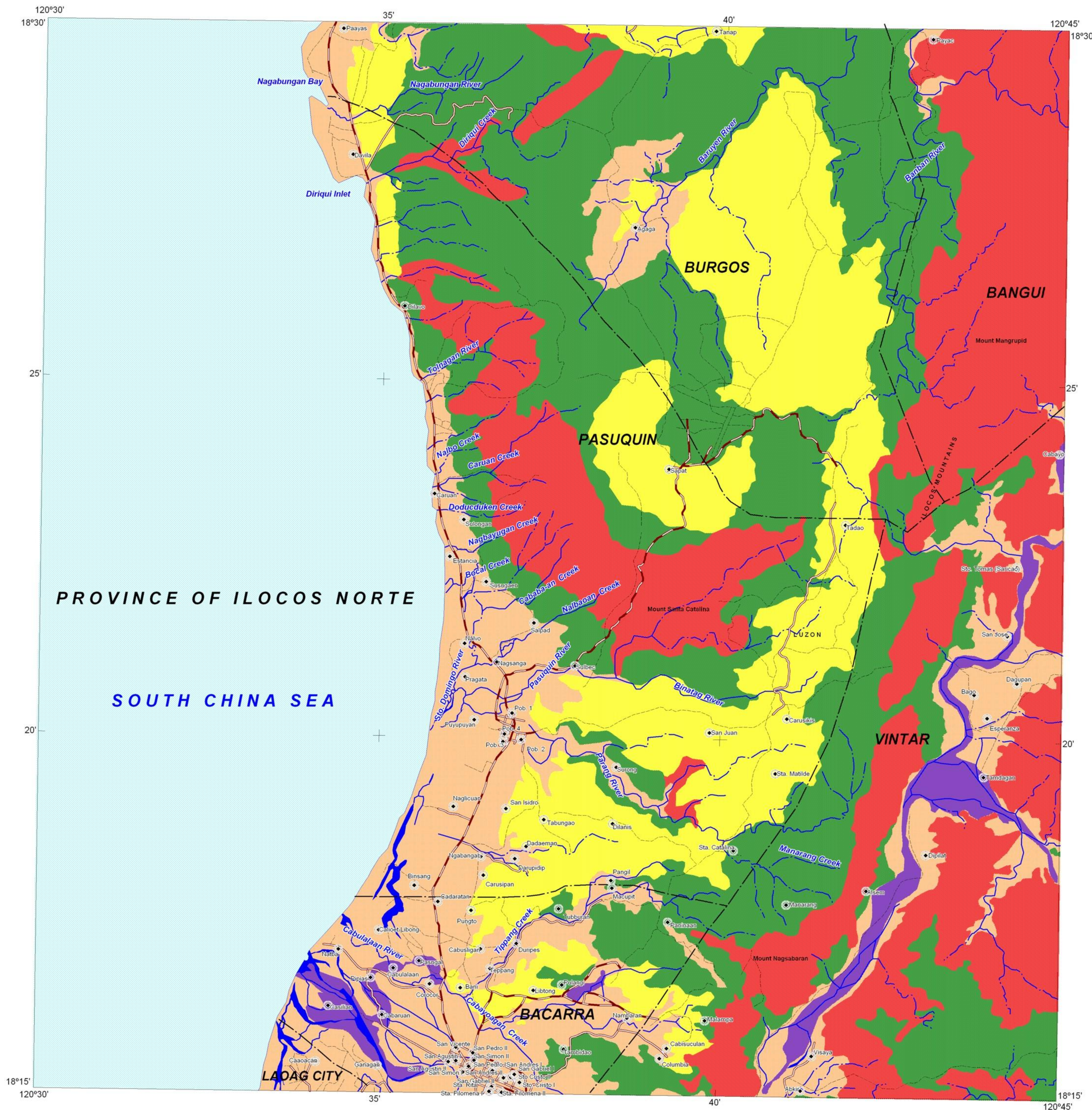
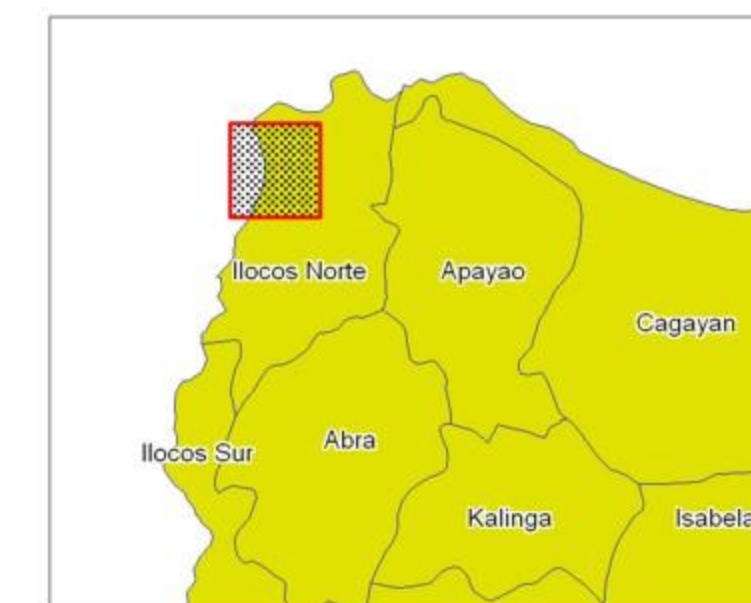


LANDSLIDE AND FLOOD SUSCEPTIBILITY MAP OF PASUQUIN QUADRANGLE, ILOCOS NORTE PROVINCE, PHILIPPINES

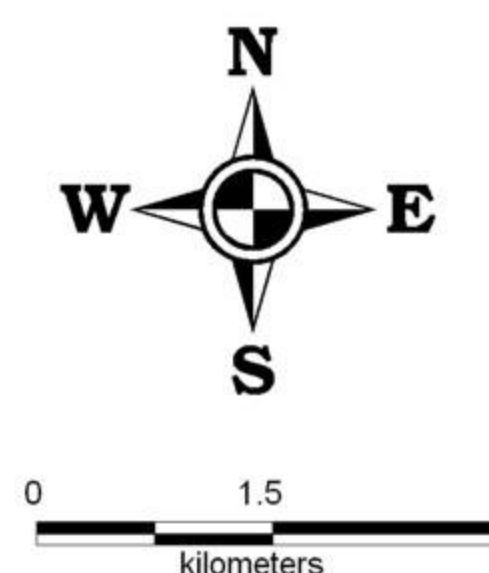


INDEX MAP



LEGEND :

- High Susceptibility to Landslide**
Areas with high landslide susceptibility rating have active/recent landslides and tension cracks that would directly affect the community. Those with steep slopes and drainages that are prone to landslide damming are also highly susceptible to landslides.
- Moderate Susceptibility to Landslide**
Areas with moderate landslide susceptibility rating have inactive/old landslides and tension cracks which are located away from the community. These areas usually have moderate slopes.
- Low Susceptibility to Landslide**
Areas with low to gentle slopes and lacking tension cracks have low landslide susceptibility rating.
- High susceptibility to flooding**
Areas with greater than 1 meter flood height. These areas are usually flooded for several hours during heavy rains; include landforms of topographic lows such as active river channels, abandoned river channels and areas along river banks; also prone to flashfloods.
- Low to moderate susceptibility to flooding**
Areas with less than 1 meter flood height. These are usually inundated during prolonged and extensive heavy rainfall or extreme weather condition.
- Roads**
- River**
- Municipal boundary**
- Barangay center location**



TRANSVERSE MERCATOR PROJECTION
MAPPING SCALE 1:50,000

GIS Processing :

Lands Geological Survey Division

Data Sources:
MGB Geohazard Assessment Team
Geological Database and Information Systems Section
Lands Geological Survey Division
Geosciences Division MGB RO I

Base Map :
Sheet No. 7179 IV "Pasuquin Quadrangle"



DEPARTMENT OF ENVIRONMENT AND NATURAL RESOURCES
MINES AND GEOSCIENCES BUREAU
LANDS GEOLOGICAL SURVEY DIVISION