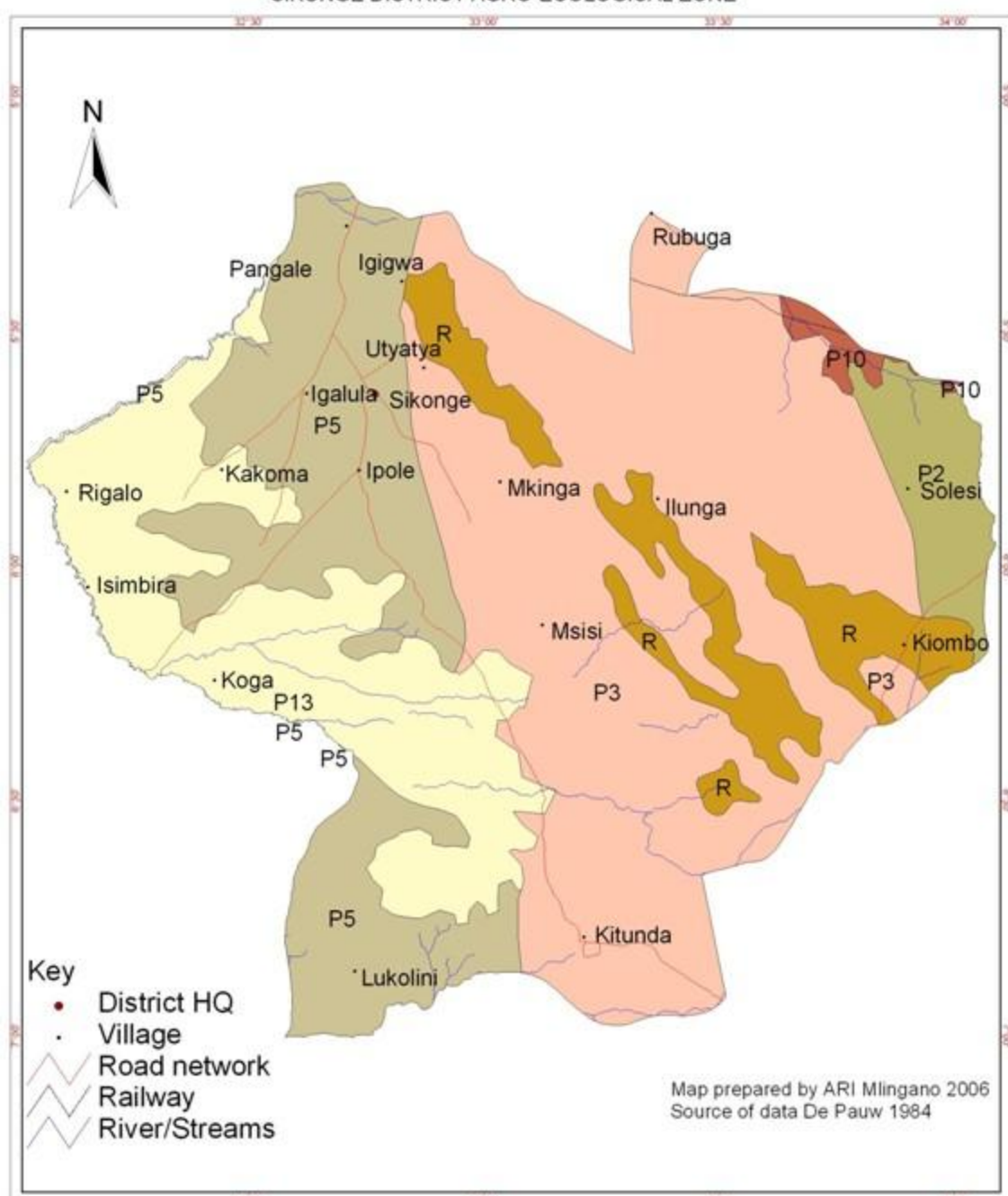


# SIKONGE DISTRICT AGRO-ECOLOGICAL ZONE



Aez_code	Altitude (masl)	Rainfall(mm/year)	Physiography
P10	1100-1400	500 - 800	Gently undulating plains developed on continental deposits on granites
P13	900-1200	800 - 1000	Fiat, seasonally inundated plains with permanent or semi-permanent swamps
P2	1100-1300	200 - 400	Gently undulating plains mostly well drained developed on granites and gneisses
P3	1100-1300	800 - 1000	Gently undulating plains mostly well drained developed on granites and gneisses
P5	1100-1300	600 - 1000	Gently undulating plains mostly well drained developed on granites and gneisses
R	Not applicable	Not applicable	Rocky terrain