

Is it only Edogawa City? /

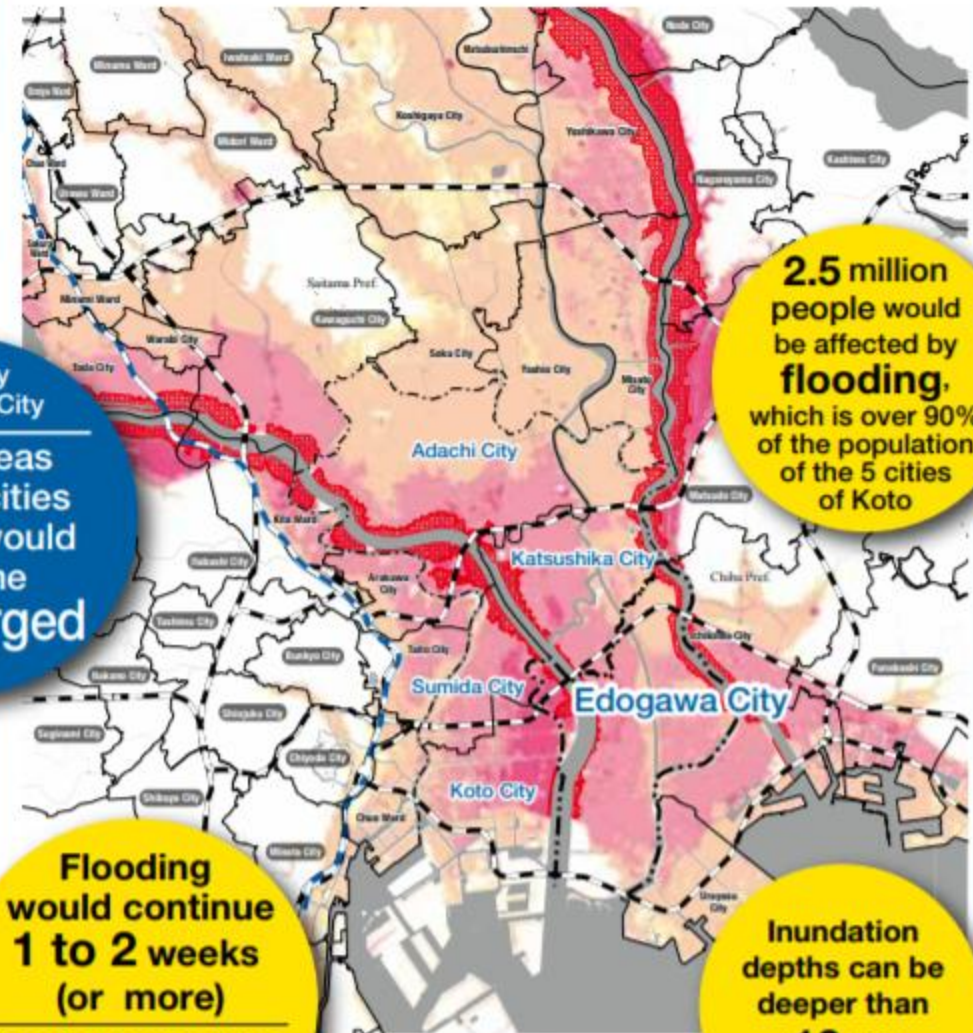
Expected inundation area map of Arakawa River flooding, Edogawa River flooding, and High tide flooding (maximum expected scale)

Not only Edogawa City

Most areas in the 5 cities of Koto would become submerged

Apart from Edogawa City, most areas in the 5 cities of Koto* will become submerged.

*Edogawa City, Sumida City, Koto City, Adachi City and Katsushika City



2.5 million people would be affected by flooding, which is over 90% of the population of the 5 cities of Koto

Flooding would continue 1 to 2 weeks (or more)

Flooding may continue for more than 2 weeks at the longest

Inundation depths can be deeper than 10 m at the most