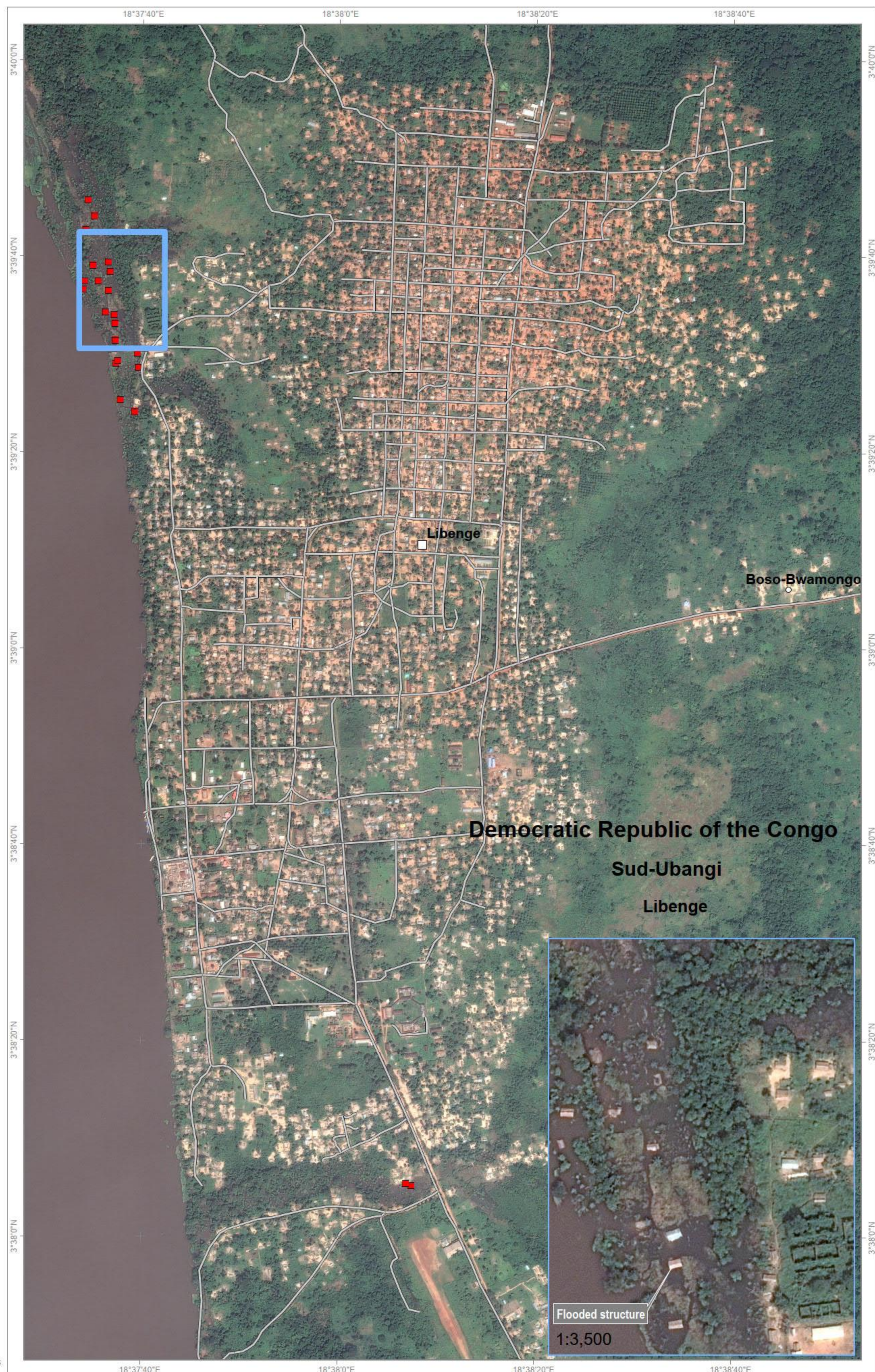


Satellite-detected flooded structures, as of 15 November 2019, over Libenge, Libenge Territory, Sud-Ubangui Province, Democratic Republic of the Congo

This map illustrates satellite-detected flooded structures along the Ubangi River over Libenge, Libenge Territory, Sud-Ubangui Province in Democratic Republic of the Congo as observed from Pleiades imagery acquired on 15 November 2019. UNITAR-UNOSAT identified 22 potentially flooded structures west of Libenge, within the extent of this map. This is a preliminary analysis and has not yet been validated in the field. Please send ground feedback to UNITAR -UNOSAT.



Analysis conducted with ArcGIS v10.4.1

Coordinate System: WGS 1984 UTM Zone 34N
Projection: Transverse Mercator
Datum: WGS 1984
Units: Meter

Satellite Data (1): Pleiades
Imagery Dates: 15 November 2019
Resolution: 50 cm
Copyright: CNES (2019), distribution Airbus D&S
Source: Airbus D&S

Road Data : OSM
Other Data: HDX, OSM
Analysis : UNITAR - UNOSAT
Production: UNITAR - UNOSAT

The depiction and use of boundaries, geographic names and related data shown here are not warranted to be error-free nor do they imply official endorsement or acceptance by the United Nations. UNOSAT is a program of the United Nations Institute for Training and Research (UNITAR), providing satellite imagery and related geographic information, research and analysis to UN humanitarian & development agencies & their implementing partners. This work by UNITAR-UNOSAT is licensed under a CC BY-NC 3.0.