



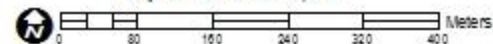
Damage Assessment of Enrile town and surroundings

This map illustrates satellite-detected potentially damaged buildings in Enrile town and surroundings, Cagayan Province, Philippines. The UNITAR-UNOSAT analysis used a Pleiades satellite image acquired on the 25 October 2016 as a post-image. The UNITAR-UNOSAT analysis identified 661 potentially damaged structures within the map extent of which 591 were identified inside the town of Enrile. This is a preliminary analysis and has not yet been validated in the field. Please send ground feedback to UNITAR - UNOSAT.

Legend

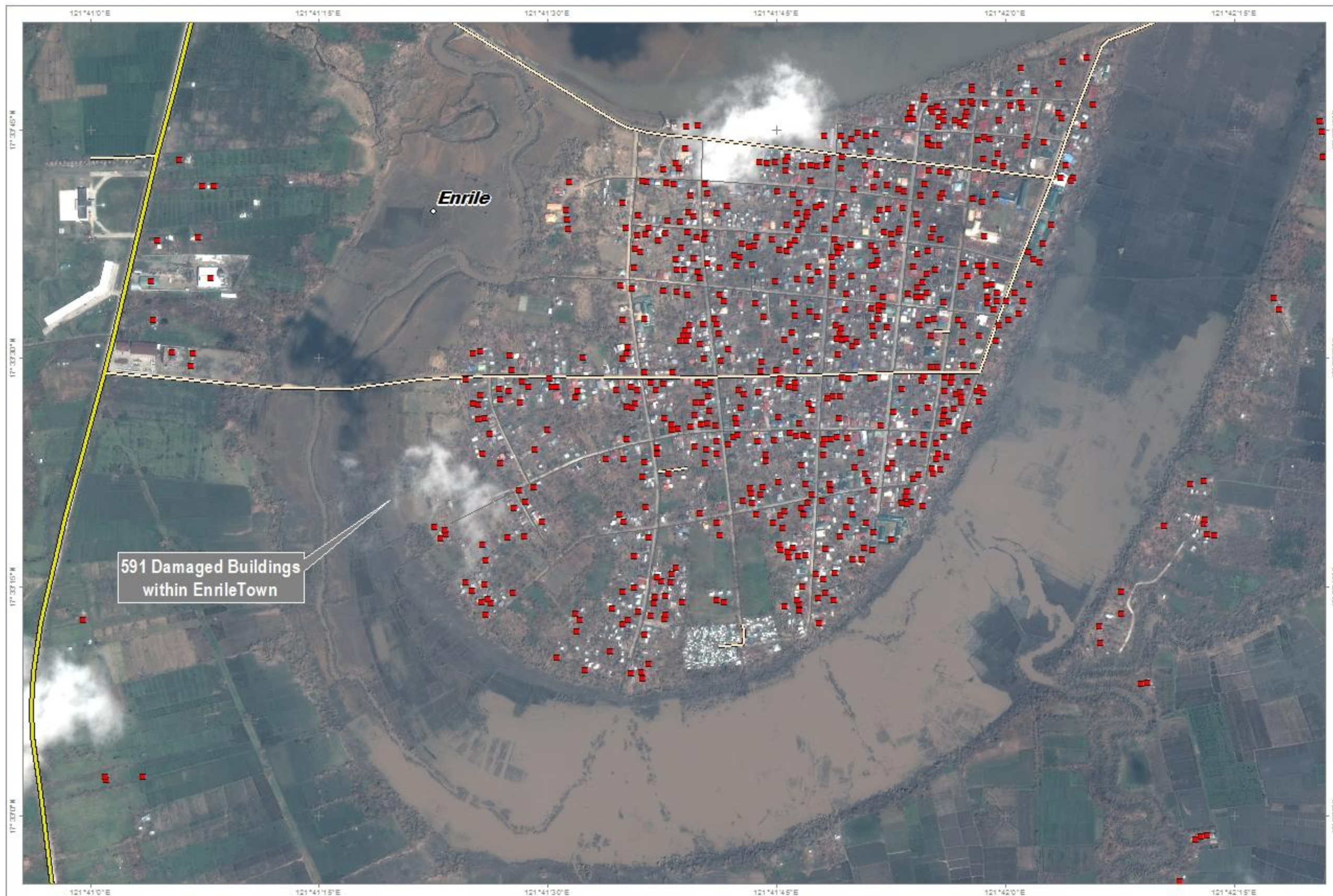
- Damaged structure
- ◇ Town/Village
- Highway/Primary road
- Secondary road
- Local/Urban road

Map Scale for A3: 1:8,000



Analysis conducted with ArcGIS v10.3

Coordinate System: GCS WGS 1984
Datum: WGS 1984
Units: Degree



Satellite Data (1): Pleiades
Imagery Dates: 25 October 2016
Resolution: 50 cm
Copyright: CNES (2016), Distribution AIRBUS DS
Source: Airbus Defence and Space

Road Data: OpenStreetMap
Analysis: UNITAR - UNOSAT
Production: UNITAR - UNOSAT



The depiction and use of boundaries, geographic names and related data shown here are not warranted to be error-free nor do they imply official endorsement or acceptance by the United Nations. UNOSAT is a program of the United Nations Institute for Training and Research (UNITAR), providing satellite imagery and related geographic information, research and analysis to UN humanitarian & development agencies & their implementing partners. This work by UNITAR-UNOSAT is licensed under a CC BY-NC 3.0