



### Satellite Detected Surface Waters in D'joumane/Bongor areas, Chad

This map illustrates the satellite-detected surface water extent over D'joumane/Bongor and surroundings in Chad along the Logone River as observed from the Radarsat-2 SAR image acquired on 5 October 2017. The analysis of the image indicate that localized standing flood water with very little impact on population and agriculture area. Within the analyzed area (11,680 km<sup>2</sup>), 15,331 ha of surface water extent was observed of which 6667 ha in Chad and 8664 ha in Cameroon. This is a preliminary analysis and has not yet been validated in the field. Please send ground feedback to UNITAR - UNOSAT.

#### Legend

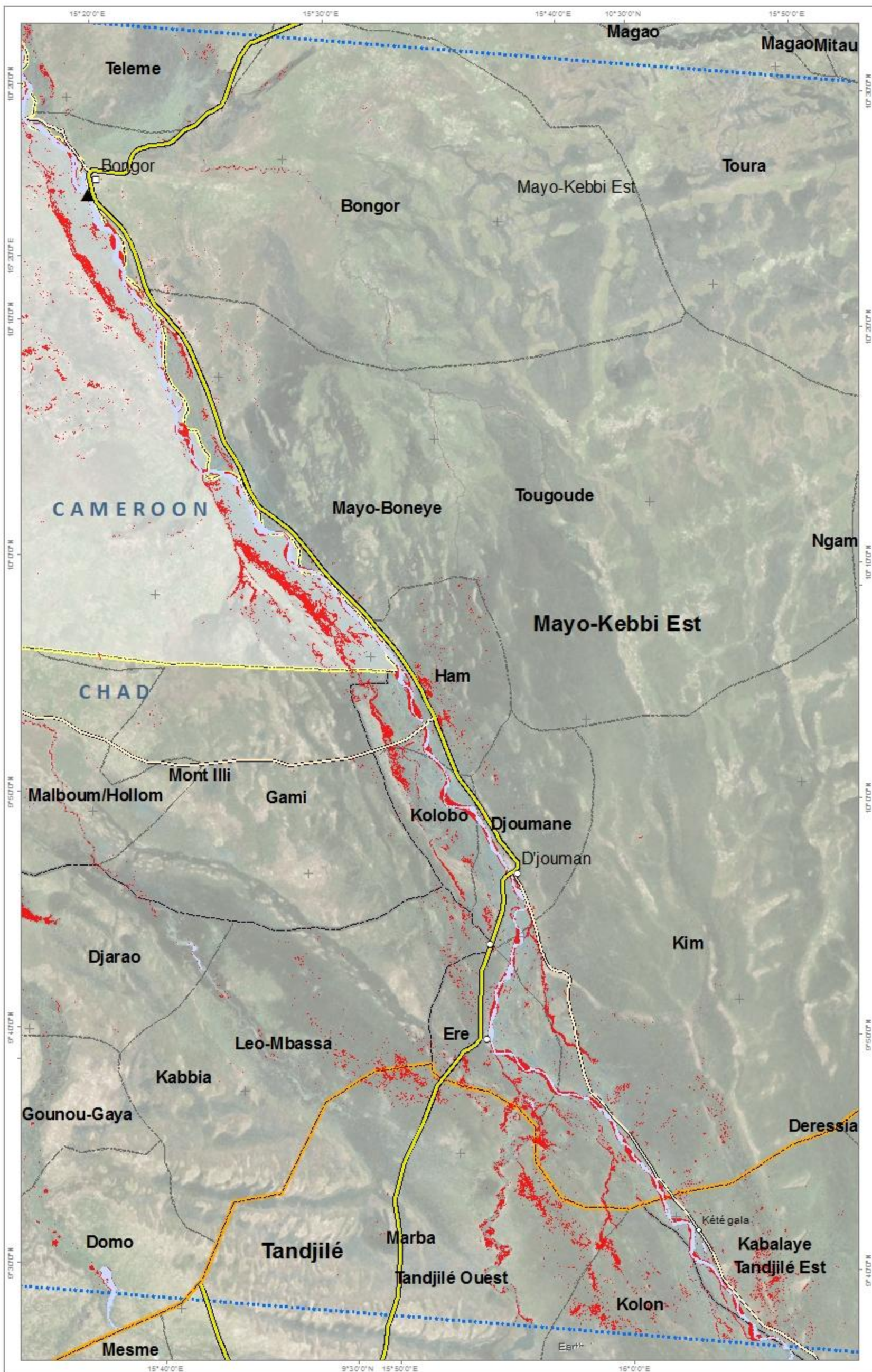
- City/Town
- Locality/Village
- ▲ Gauge station
- Primary road
- Secondary road
- Reference water
- Satellite detected waters [05/10/2017]
- International boundary
- Region boundary
- Department boundary
- Sub-prefecture
- Analysis extent

Map Scale for A3: 1:325,000



Analysis conducted with ArcGIS v10.4.1

Coordinate System: WGS 1984 UTM Zone 33N  
Projection: Transverse Mercator  
Datum: WGS 1984  
Units: Meter



Satellite Data (1): Radarsat-2  
Imagery Dates: 05 October 2017  
Resolution: 12 m  
Copyright: MacDonald, Dewitter and Associates, Ltd. (2017)  
Source: Ksat

Gauge stations: Ministère de l'Eau et de l'Assainissement du Tchad  
Road Data: OpenStreetMap, HDX  
Other Data: ResEau Tchad  
Analysis: UNITAR - UNOSAT  
Production: UNITAR - UNOSAT

The depiction and use of boundaries, geographic names and related data shown here are not warranted to be error-free nor do they imply official endorsement or acceptance by the United Nations. UNOSAT is a program of the United Nations Institute for Training and Research (UNITAR), providing satellite imagery and related geographic information, research and analysis to UN humanitarian & development agencies & their implementing partners. This work by UNITAR-UNOSAT is licensed under a CC BY-NC 3.0.