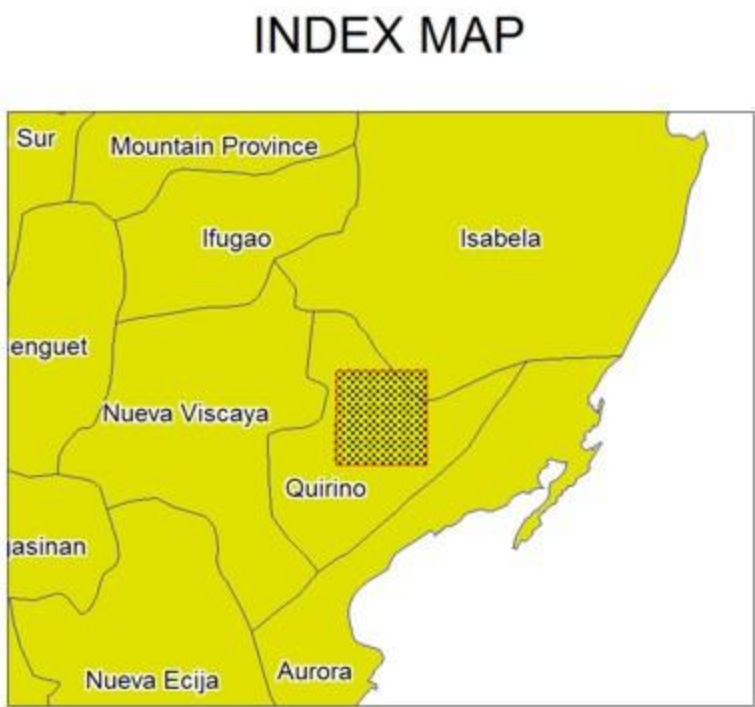
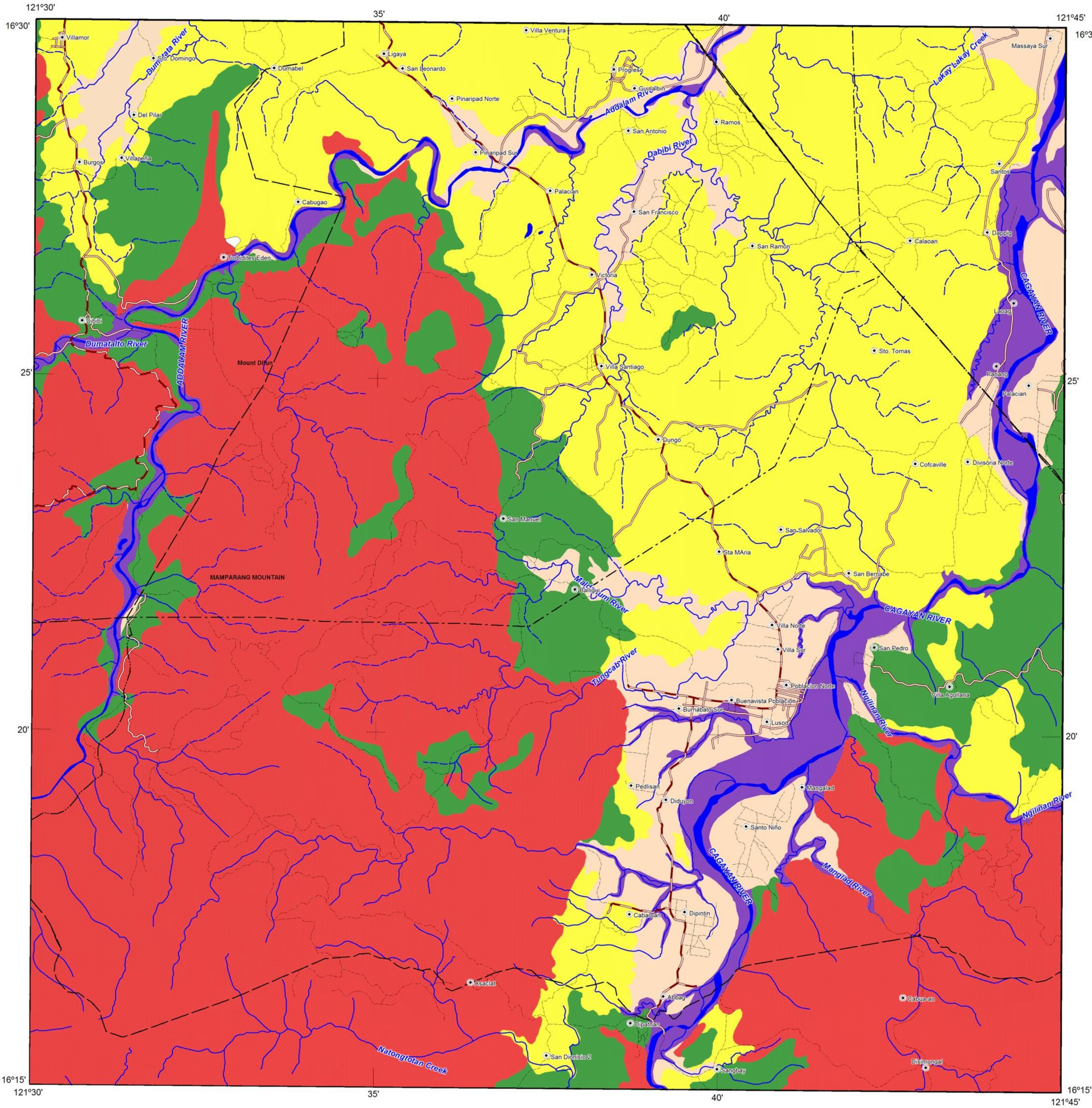
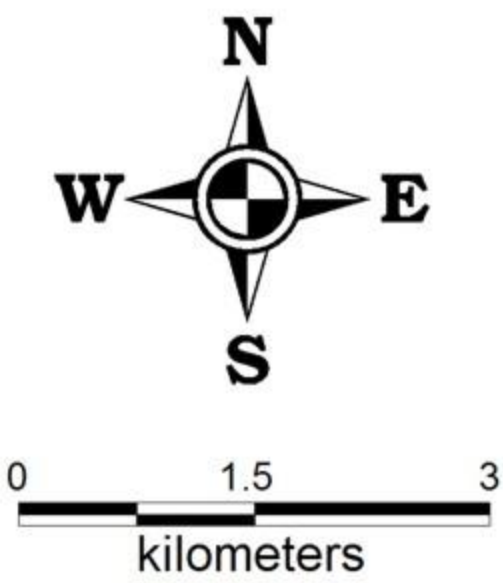


LANDSLIDE AND FLOOD SUSCEPTIBILITY MAP OF MADDELA QUADRANGLE ISABELA PROVINCE, PHILIPPINES



- LEGEND :**
- High susceptibility to landslide**
Areas with high landslide susceptibility rating have active/recent landslides and tension cracks that would directly affect the community. Those with steep slopes and drainages that are prone to landslide damming are also highly susceptible to landslides.
 - Moderate susceptibility to landslide**
Areas with moderate landslide susceptibility rating have inactive/old landslides and tension cracks which are located away from the community. These areas usually have moderate slopes.
 - Low susceptibility to landslide**
Areas with low to gentle slopes and lacking tension cracks have low landslide susceptibility rating.
 - High susceptibility to flooding**
Areas with greater than 1 meter flood height. These areas are usually flooded for several hours during heavy rains; include landforms of topographic lows such as active river channels, abandoned river channels and areas along river banks; also prone to flashfloods.
 - Low to moderate susceptibility to flooding**
Areas with less than 1.0 meter flood height. These are usually inundated during prolonged and extensive heavy rainfall or extreme weather condition

- Roads
- River
- Municipal boundary
- Barangay center location



TRANSVERSE MERCATOR PROJECTION
MAPPING SCALE 1:50, 000

- GIS Processing :**
Lands Geological Survey Division
- Data Sources:**
MGB Geohazard Assessment Team
Geological Database and Information Systems Section
Lands Geological Survey Division
Geosciences Division MGB RO II
- Base Map :**
Sheet No. 7375 IV "Maddela Quadrangle"