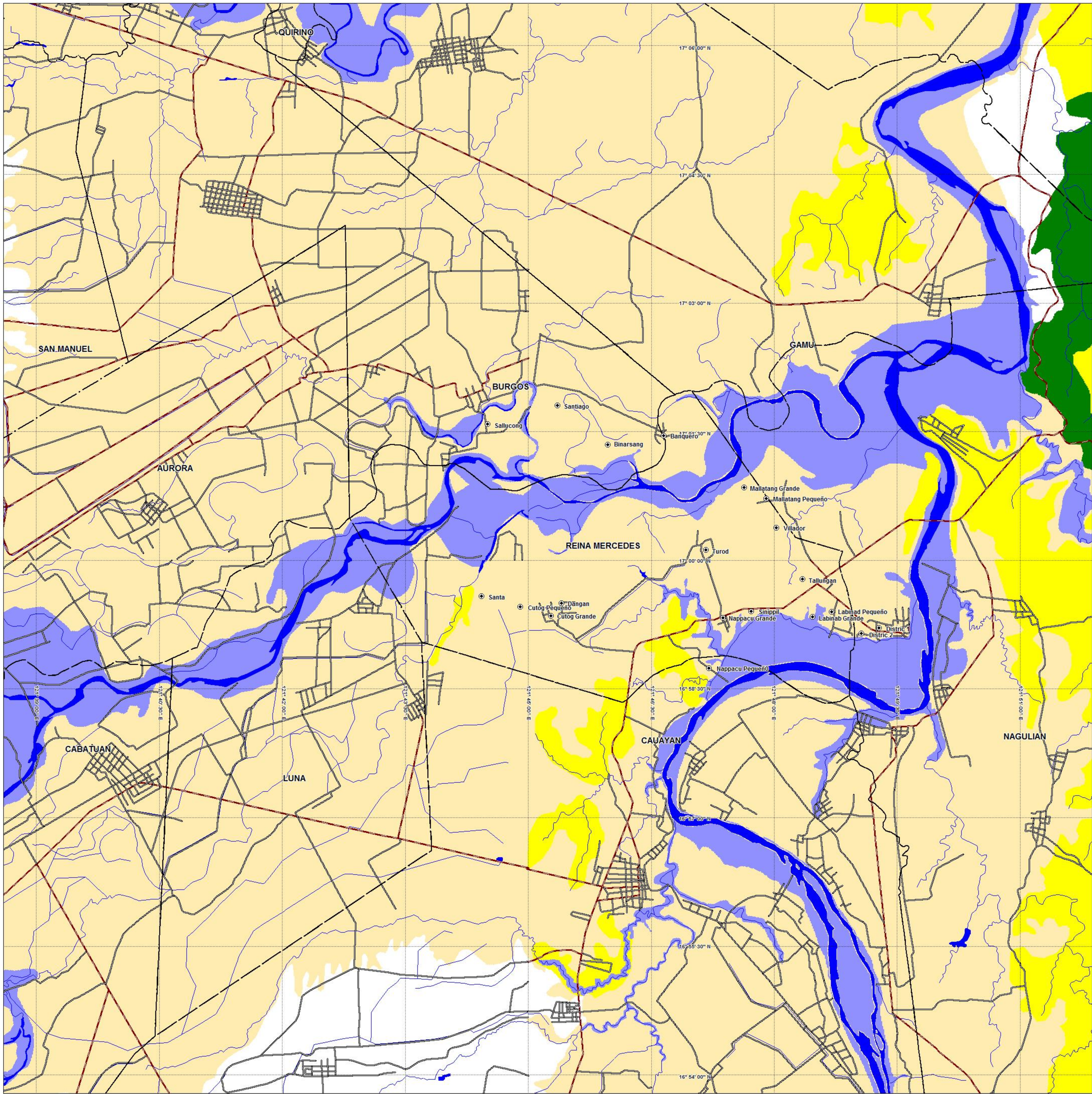


# LANDSLIDE AND FLOOD SUSCEPTIBILITY MAP

## MUNICIPALITY OF REINA MERCEDES

### ISABELA PROVINCE, PHILIPPINES



#### INDEX MAP



#### LEGEND :

##### Landslide

- High susceptibility to landslide**  
Areas with high landslide susceptibility rating have active/recent landslide and tension cracks that would directly affect the community. Those with steep slopes and drainages that are prone to landslide damming are also highly susceptible to landslide.
- Moderate susceptibility to landslide**  
Areas with moderate landslide susceptibility rating have inactive/old landslide and tension cracks which are located away from the community. These areas usually have moderate slopes.
- Low susceptibility to landslide**  
Areas with low to gentle slopes and lacking tension cracks have low landslide susceptibility rating.

##### Flooding

- High susceptibility to flooding**  
Areas with greater than 1 meter flood height. These areas are usually flooded for several hours during heavy rains; include landforms of topographic lows such as active river channels, abandoned river channels and areas along river banks, also prone to flashfloods.
- Low to moderate susceptibility to flooding**  
Areas with less than 1.0 meter flood height. These areas are usually inundated during prolonged and extensive heavy rainfall or extreme weather conditions.

- Major road
- Secondary road
- River
- Municipal boundary
- Barangay hall location



0 2,500 5,000  
meters

LATITUDE/LONGITUDE  
Luzon for Philippines  
MAPPING SCALE 1:50,000

**GIS Processing :**  
Geological Database and Information Systems Section  
Urban Geology Section  
Lands Geological Survey Division  
Geosciences Division MGB RO II

**Data Sources:**  
MGB Geohazard Assessment Team  
Geological Database and Information Systems Section  
Lands Geological Survey Division  
Geosciences Division MGB RO II

**Base Map :**  
Sheet No. 7376 IV "San Mateo Quadrangle"  
Sheet No. 7276 I "Bunhian Quadrangle"  
Sheet No. 7376 III "Santiago Quadrangle"  
Sheet No. 7276 II "Cordon Quadrangle"



DEPARTMENT OF ENVIRONMENT AND NATURAL RESOURCES  
**MINES AND GEOSCIENCES BUREAU**  
GEOSCIENCES DIVISION