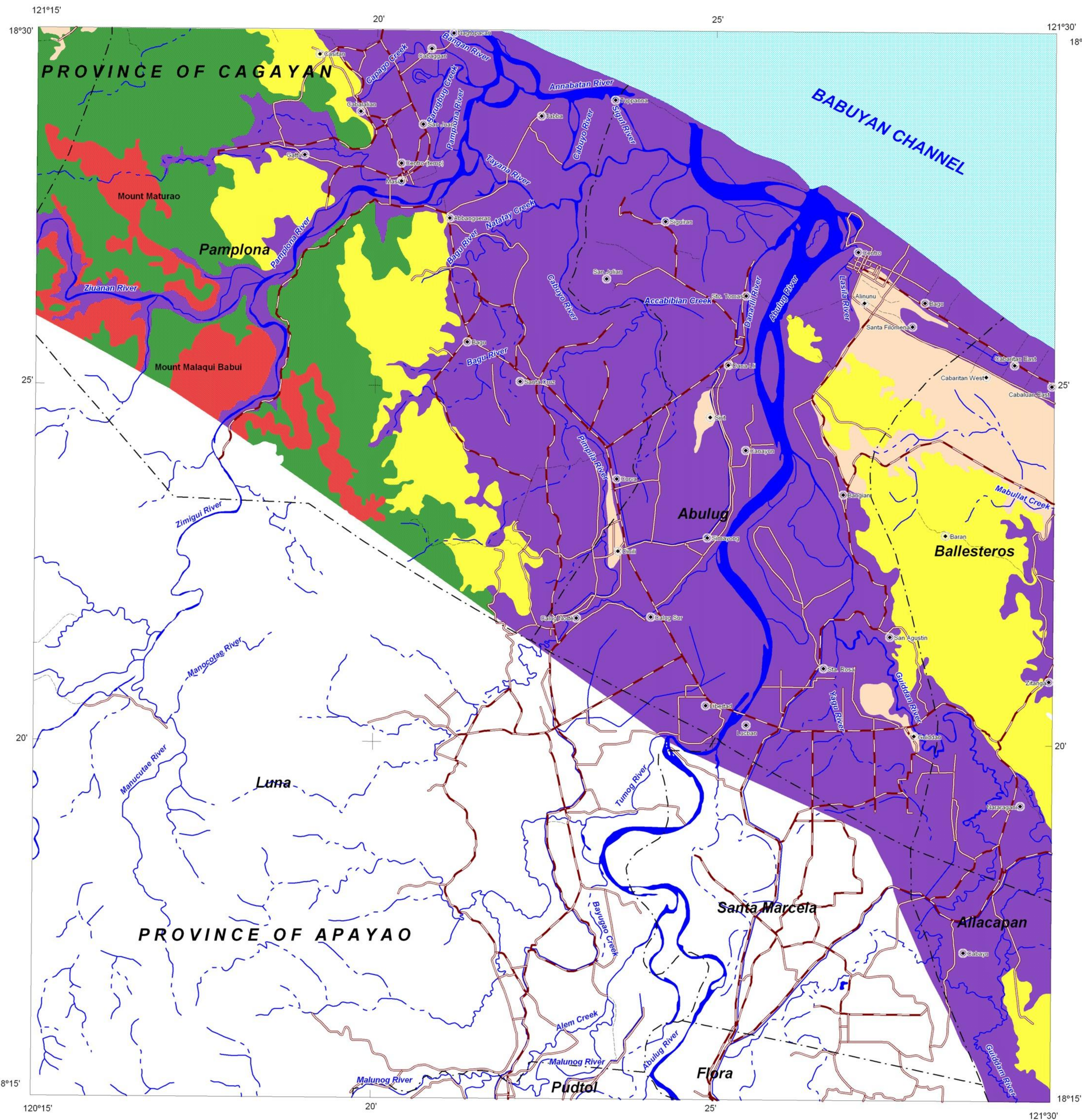


# LANDSLIDE AND FLOOD SUSCEPTIBILITY MAP OF ABULUG QUADRANGLE, CAGAYAN PROVINCE, PHILIPPINES

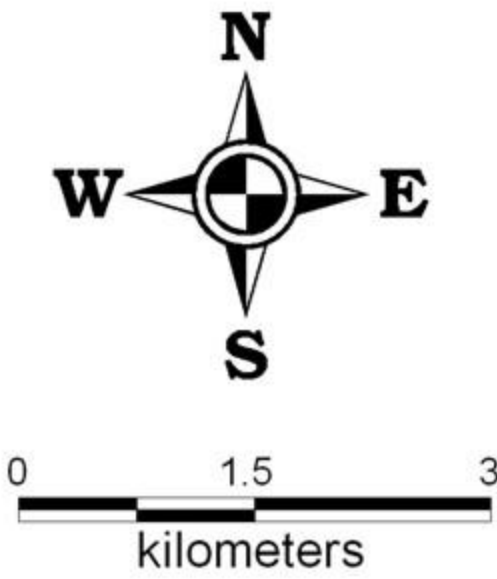


INDEX MAP



LEGEND :

- High susceptibility to landslide**  
Areas with high landslide susceptibility rating have active/recent landslides and tension cracks that would directly affect the community. Those with steep slopes and drainages that are prone to landslide damming are also highly susceptible to landslides.
  - Moderate susceptibility to landslide**  
Areas with moderate landslide susceptibility rating have inactive/old landslides and tension cracks which are located away from the community. These areas usually have moderate slopes.
  - Low susceptibility to landslide**  
Areas with low to gentle slopes and lacking tension cracks have low landslide susceptibility rating.
  - High susceptibility to flooding**  
Areas with greater than 1 meter flood height. These areas are usually flooded for several hours during heavy rains; include landforms of topographic lows such as active river channels, abandoned river channels and areas along river banks; also prone to flashfloods.
  - Low to moderate susceptibility to flooding**  
Areas with less than 1.0 meter flood height. These are usually inundated during prolonged and extensive heavy rainfall or extreme weather condition
- Roads  
 River  
 Municipal boundary  
 Barangay center location



TRANSVERSE MERCATOR PROJECTION  
MAPPING SCALE 1:50,000

GIS Processing :  
Lands Geological Survey Division

Data Sources:  
MGB Geohazard Assessment Team  
Geological Database and Information Systems Section  
Lands Geological Survey Division  
Geosciences Division MGB RO II

Base Map :  
Sheet No. 7279 I "Abulug Quadrangle"



DEPARTMENT OF ENVIRONMENT AND NATURAL RESOURCES  
**MINES AND GEOSCIENCES BUREAU**  
LANDS GEOLOGICAL SURVEY DIVISION