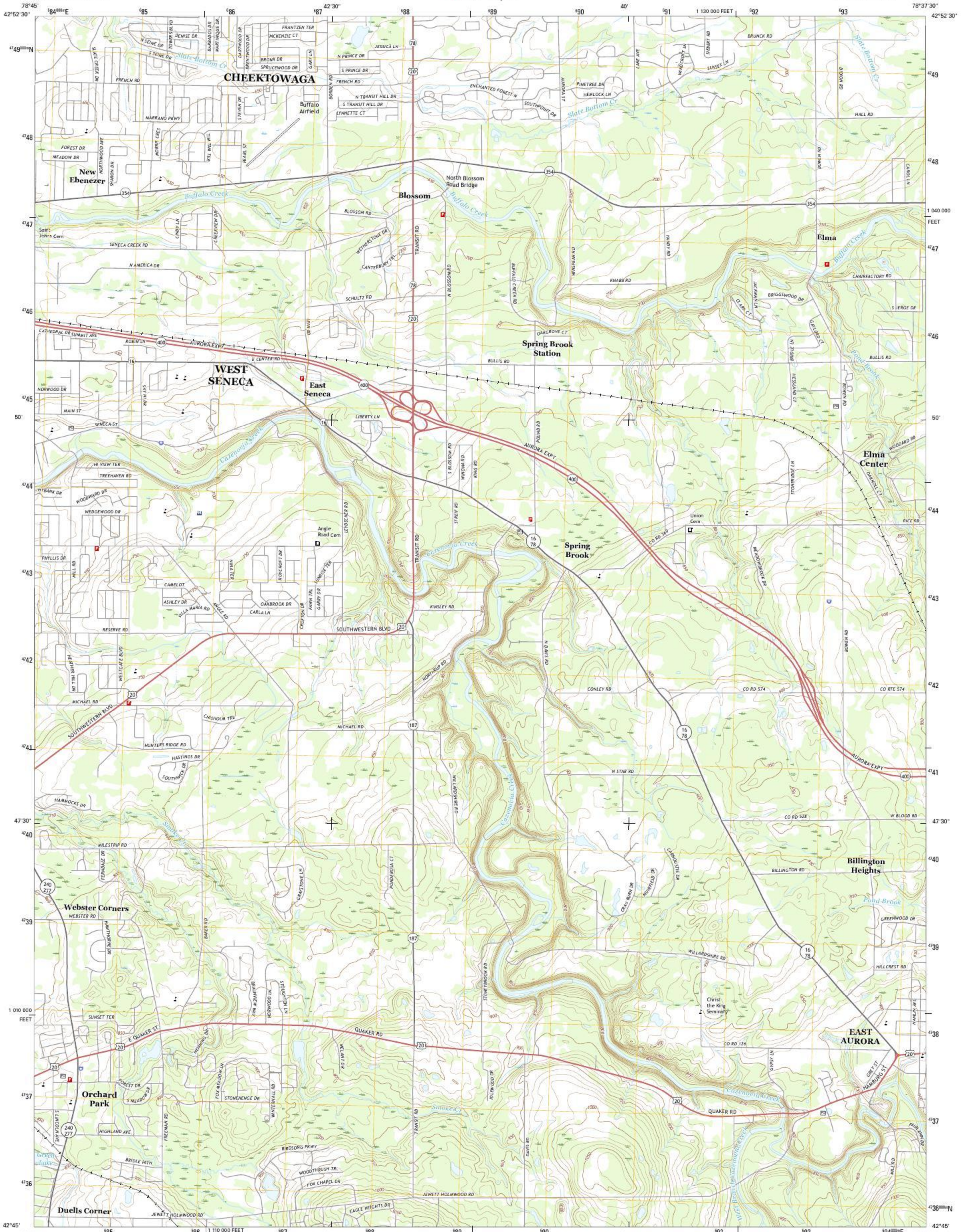




U.S. DEPARTMENT OF THE INTERIOR
U.S. GEOLOGICAL SURVEY



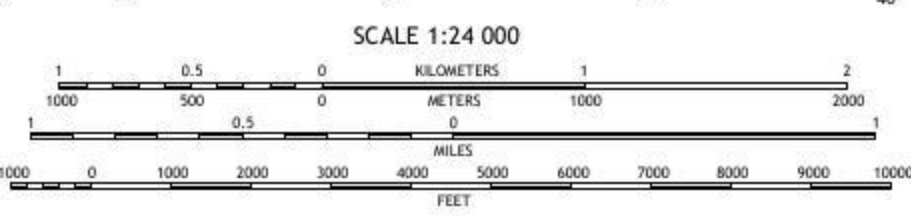
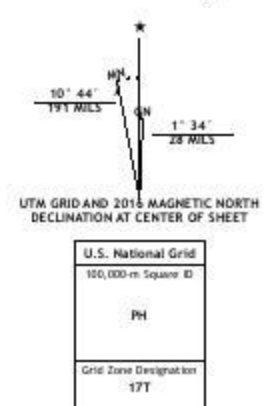
ORCHARD PARK QUADRANGLE
NEW YORK-ERIE CO.
7.5-MINUTE SERIES



Produced by the United States Geological Survey
 North American Datum of 1983 (NAD83)
 World Geodetic System of 1984 (WGS84). Projection and
 1 000-meter grid: Universal Transverse Mercator. Zone 17T
 10 000-foot ticks: New York Coordinate System of 1983 (west
 zone)

This map is not a legal document. Boundaries may be
 generalized for this map scale. Private lands within government
 reservations may not be shown. Obtain permission before
 entering private lands.

Imagery:.....NAIP, September 2013
 Roads:.....U.S. Census Bureau, 2015 - 2016
 Names:.....National Hydrography Dataset, 2013
 Hydrography:.....National Elevation Dataset, 1999
 Contours:.....Metabolic sources; see metadata file 1972 - 2016
 Wetlands:.....FWS National Wetlands Inventory 1977 - 2014



ROAD CLASSIFICATION			
Expressway	Local Connector		
Secondary Hwy	Local Road		
Ramp	4WD		
Interstate Route	US Route		State Route

1	2	3	1 Buffalo NE
2	3	4	2 Lancaster
3	4	5	3 Clarence
4	5	6	4 Buffalo SE
5	6	7	5 East Aurora
6	7	8	6 Hamburg
7	8		7 Colden
8			8 Holland

ORCHARD PARK, NY
2016

